

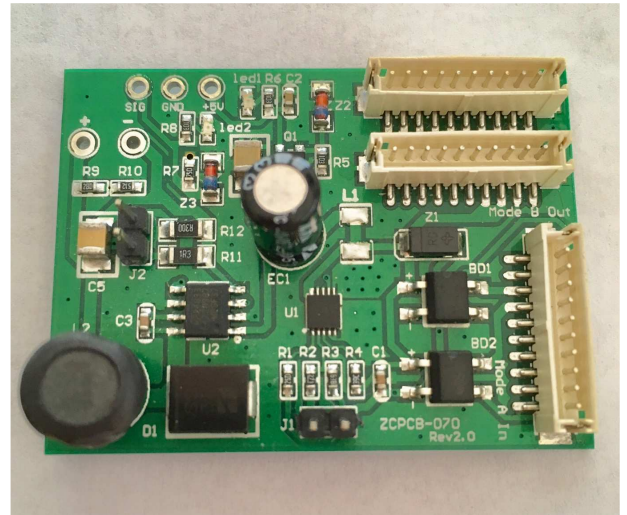


Austin Led Consultants

DMX and Led power over ethernet

ATX Led Consultants Inc
815-A Brazos #326
Austin Tx, 78701
512 377-6052

<http://atxled.com>



OEM PoE Conversion Kit

Convert any LED to PoE, 802.3at, 802.3af or Passive

[Product Description - PL-PoE-OEM](#)

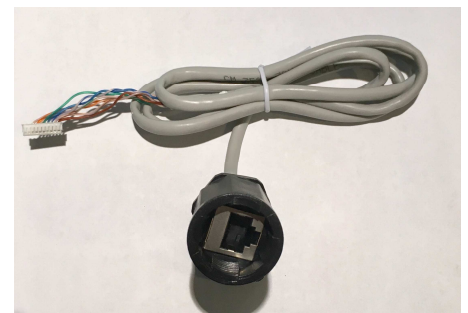
This PCB can convert a LED to PoE. You can choose your own fixture, white light or IR, from 5 to 30 watts, with PIR or Dusk/Dawn control. Then your LED is powered by Ethernet cable! You can now add light anywhere – without the need for 110v wiring.

The PCB can either be used with Cisco or similar PoE switches, 802.3af (13watt) or 802.3at (25 watt). It can also be used with passive PoE injectors. The active PoE method negotiates with the switch to activate power for the built-in LED. The PoE switch supplies 48, 51 or 56 volts DC at the source location, the LED floodlight can be up to 328 ft away. The Passive method is lower cost since no data is required.

We also offer kits with up to 16 ports of passive PoE power – so one power supply can feed 4, 8, 12 or 16 floodlights at less cost than a Cisco switch. These kits include the Multi Port Passive POE injector and a power supply of 30 watts, 60 watts or 120 watts.

[Specifications](#)

Power source	RJ 45 male connector RJ45 Female connector
Power Protocol	802.3af class 3 for up to 12 watt LED (J1 out) 802.3at class 4 for up to 25 watt LED (J1 in) Passive PoE for up to 40 watts
Input voltage range	44v to 57 volts
Power and Data pins	1&2 and 3&6 in 802.3af / 802.3at 4&5 and 7&8 for passive
PoE Connector	Zhr type 10 pin connector – 2 mode B, one mode A Solder type, jumper selectable 600 ma (J2 out) and 750 ma (J2 in) - range from 300-1000 ma 12 to 50 volts
Power to LED	5v always on to a PiR sensor use pullup resistor for CDS sensor (dusk-dawn)
PIR / Dusk –Dawn sensor input	LED can be dimmed via the SIG input see MP24833 for details on voltage curve or PWM mode diming.
Dimming	
RJ45 Connector - female	IP67 waterproof, 150cm length
Max Power consumption	9 watts in for 8 watts of LED light 21 watts in for 20 watts of LED light
Input Current at 48v	200 ma input delivers 8 watts to LED
PiR input	+5v to an external PiR detector signal input – active high, 1 megaohm load, clamped At 1.8 volts via a 10k resistor.
Operating Temperature	0°C ~ 50°C
Size	37 x 50x 16 mm



Outdoor waterproof cable



Mode B passthru cable