

# ATX LED

**100% DC low voltage**

ATX LED Consultants Inc  
815-A Brazos #326  
Austin TX, 78701  
512 377 6052  
<http://atx-led.com>

## AL-WS-ICL

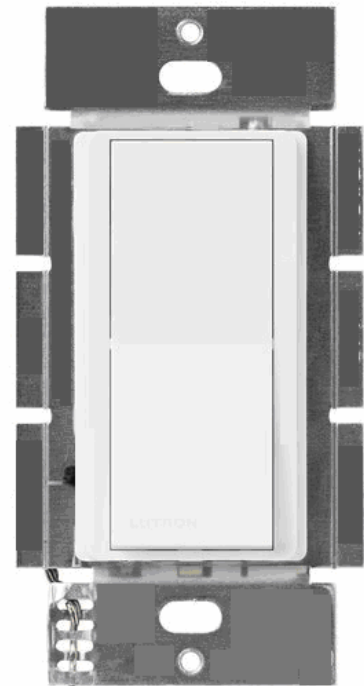
### Spark Eliminator

### Inrush Current limiting switch

### For DC capacitive loads

### 12 to 48 volts 2 amps

### 3-Way

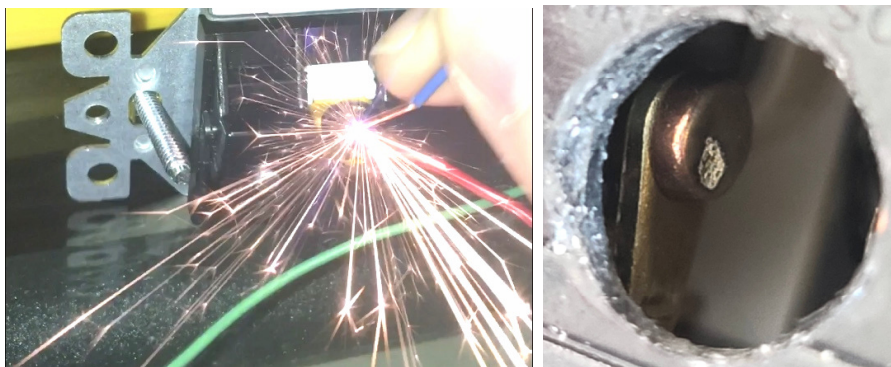


#### [Product Description - AL-WS-ICL wall switch](#)

This product is designed to solve the problem of switch failure to smart DC loads. Electronic load such as in LED and Fans – have high inrush currents that cause sparks that result in early failure of the switch or contactor.

The AL-WS-ICL solves this problem. Placing this device before DC power goes to a load, eliminates the inrush current. It includes a proven 3-way rocker switch that leverages mass production of Decorator switches, now for low voltage applications. To protect a contactor – wire the Rand B together to operate as a spark eliminator.

Use this switch with DC LED, Delta Exhaust Fans, or any electronic load. If you see sparks when connecting a load – you need this device.



Sparks damage switches - 100 cycles and serious damage

Specifications

Power source and load	Screw type connectors for AWG 12-20 wire W is minus 12 to 48 volts B is plus 12 to 48 volts R is for 3-way operation
Input voltage range	12 volts to 52 volts
Max output current	2 amps
Protection	Reverse protection and static protection
Operating Temperature	0°C ~ 50°C
Size	108H (metal) 70H x 34 D x 42 W mm
Dimming	None – see other products for dimming
FCC and interference	All outputs are RF filtered for minimal interference
3-Way input	Connect a 3-way switch to R and B inputs to support 3-Way switching
Delay Time	100 mseconds

**Three Way Operation**

