

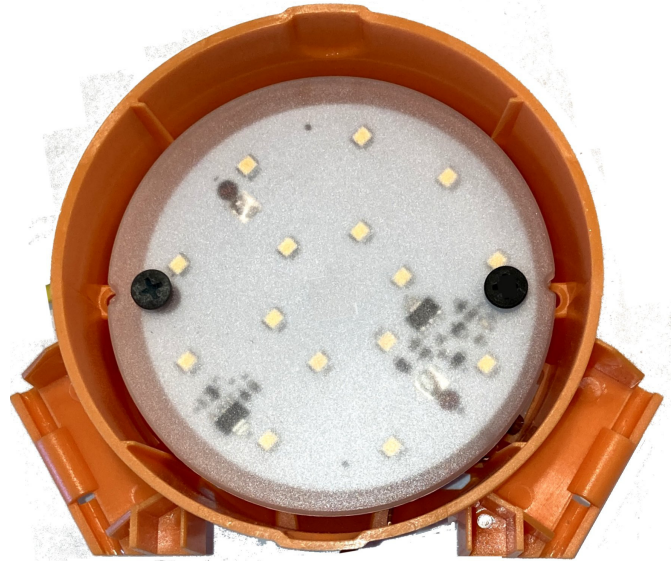


ATX LED Consultants Inc
815-A Brazos #326
Austin TX, 78701
512 377 6052
<http://atx-led.com>

Ready @ Rough™

Wiring Tester,
Wire Protector and Safe
Temporary Lighting for New
Home Construction
48vdc to 120vac operation

AL-R@R-Work



Protection

R@R protects the wires from other tradesmen – the wires are behind discs that are difficult to cut, and can be coated in mud without damage. The surfaces can be washed after trim for the next project

Light

R@R provides working lighting from the moment wiring is installed – this can provide light weeks or months while other trades complete, besides validating all wiring, useful light is provided, and light is lost the moment a wire is cut.

Safety

R@R uses isolated low voltage and low current to provide the light. Shorts by other trades are energy limited, reducing contact risk and the surprise of high energy sparks.

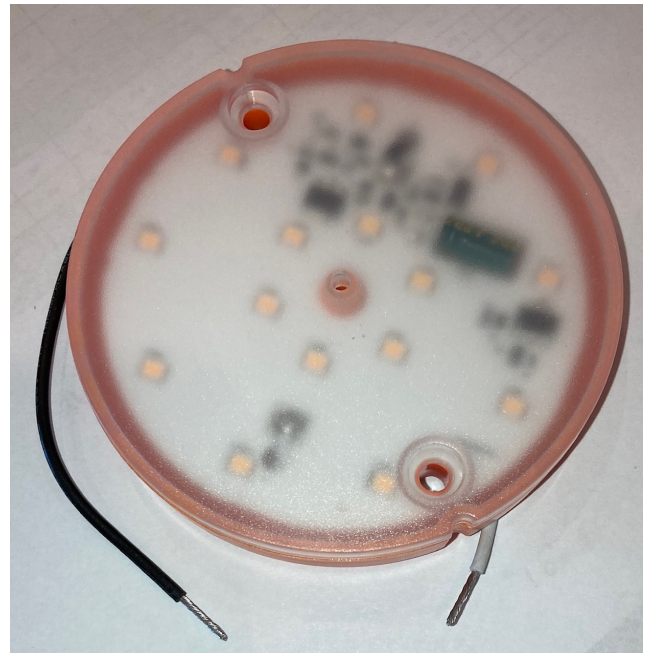
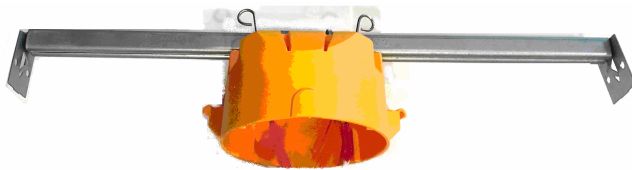
Product Description - Ready @ Rough®

This kit solves these problems for wiring in new construction

- Protects wires from Rotozip tools
- Protects wires from sheetrock mud and paint
- Provides light during construction before sheetrock – low voltage, low current, isolated and safe
- Verifies all wiring prior to sheetrock
- Saves time at trim, 3 models are available to match the final bulb type, CCT, Fixed, E26
- Optional washable clear lens to allow reuse
- No deformation of the wires
- Visual immediate reporting of tradesman wire damage

AL-R@R Work – Temporary LED

- provides work lighting in all rooms of the project
- verifies all wiring
- moves cut, stripping and wire testing to Rough stage
- protects from Rotozip™ and mud
- faster trim
- Fixed and Tunable white versions
- Re-usable – wash the mud off and reuse
- Use a sheetrock screw to extract after painting



Side Cutaway View - installed in Ceiling



Error Recognition

Ready @ Rough allows all the wiring in a house to be validated and activated prior to wallboard. This is a major time saver – and clearly shows if the wallboard or other trades have damaged the wiring.

Backwards LEDs

If LEDs were wired backwards, the device will show a Red light.

Tradesman damage and Theft management

R@R allows immediate recognition if a Tradesman cuts the wiring. During the months between rough electrical and final trim, any wire that is cut – will clearly show in that the room has no light.

48v and 120vac operation

The AL-WS-Work Ready @ Rough device allows all the wiring in a house to be validated and activated prior to wallboard. This is a major time saver – and clearly shows if the wallboard or other trades have damaged the wiring. This R@R device operates from 44 volts to 56 volts at full power. If connected to a dimmer like the AL-WS-DR2, it can be brightness controlled.



Normal 48v operation

6 LEDs are on and
dimming is possible



Normal 120vac operation

All LEDs are bright

No Dimming supported

Installed



Lit

Reversed LED

Red LED showing
means the Up/Down
is reversed

Specifications AL-R@R Work

Wiring Method	Wire this model in parallel	48v operation	120vac operation
LED Power	Pair of AWG 18 stranded wire - Black is + and White is -	44 volts to 56 volts DC	normal 110 to 130vac no dimming
LED lighting power		5 watts at 48v dimming from 38 to 46v current limited from 46 to 56v	5 watts at 120vac
Reverse LED indicator		RED led in case of reversal limited to 5 Ma	
Size	Fits inside ATX ceiling boxes fits onto ABB B620K		
Number of LEDs		6 LEDs at 44-56v	15 LEDs

Specifications AL-R@R Work-CCT (see other data sheet)

LED Power	Spring loaded connectors (2 pairs) for solid AWG 18-20 wire
Number of channels	Warm + Cool = 2 total Use both sides to test CCT installations
CCT mode	Use one side for fixed color installations
Forward LED lighting	Up to 3.50 watts of LED lighting per channel Limited to 200 mA
Reverse LED indicator	RED led in case of reversal per channel limited to 5 Ma
Size	Fits inside ATX ceiling boxes Fits surface of ABB B620K box
Dimming	Can dim to 1% using an ATX Driver